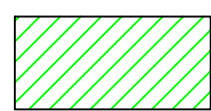
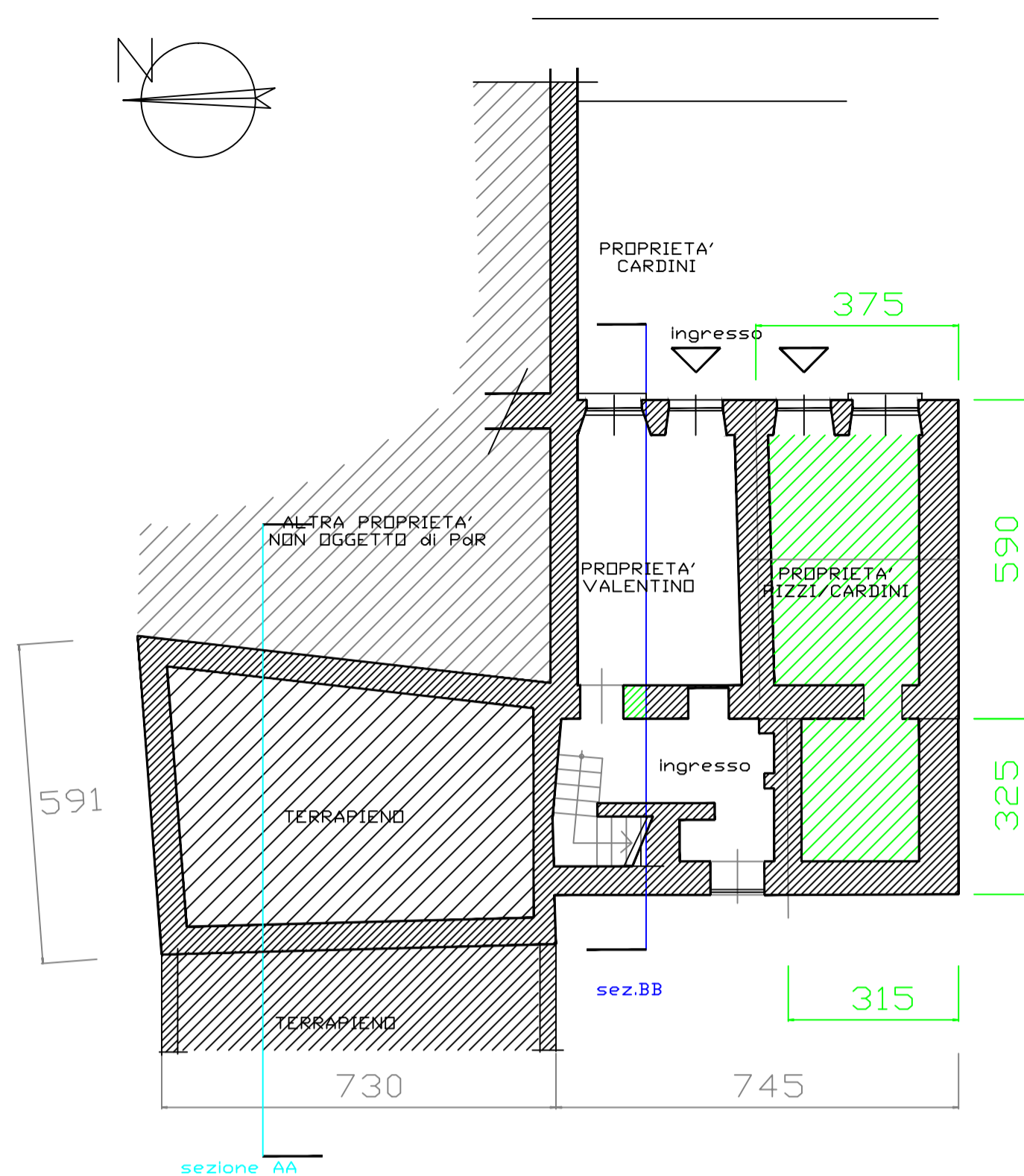


PROPRIETA' PIZZI/CARDINI

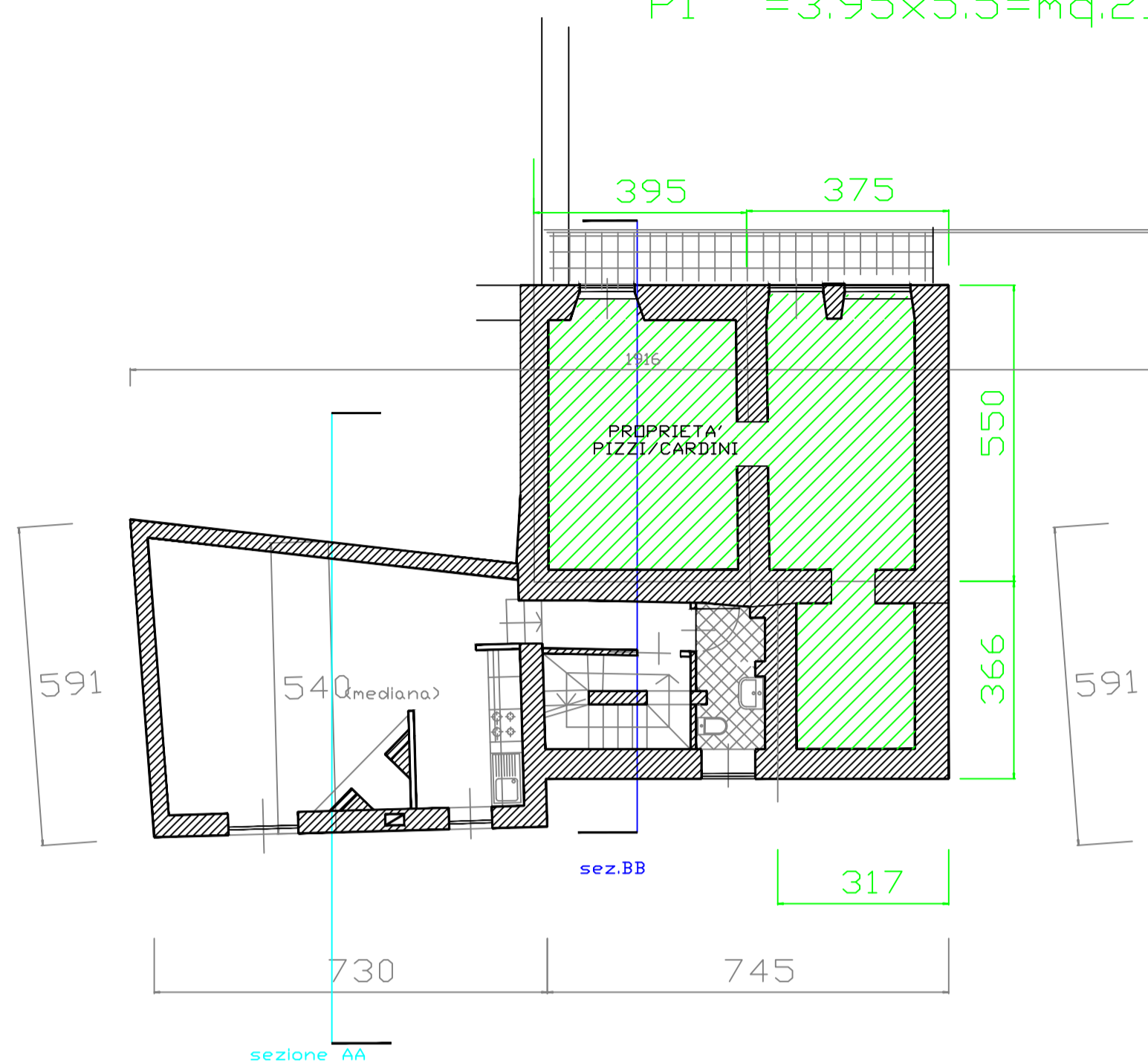


$PT+P1 = 3.15 \times 3.25 + 3.75 \times 5.9 = \text{mq.} 32.35 \times \text{h.} 5.25 = \text{mc.} 170$

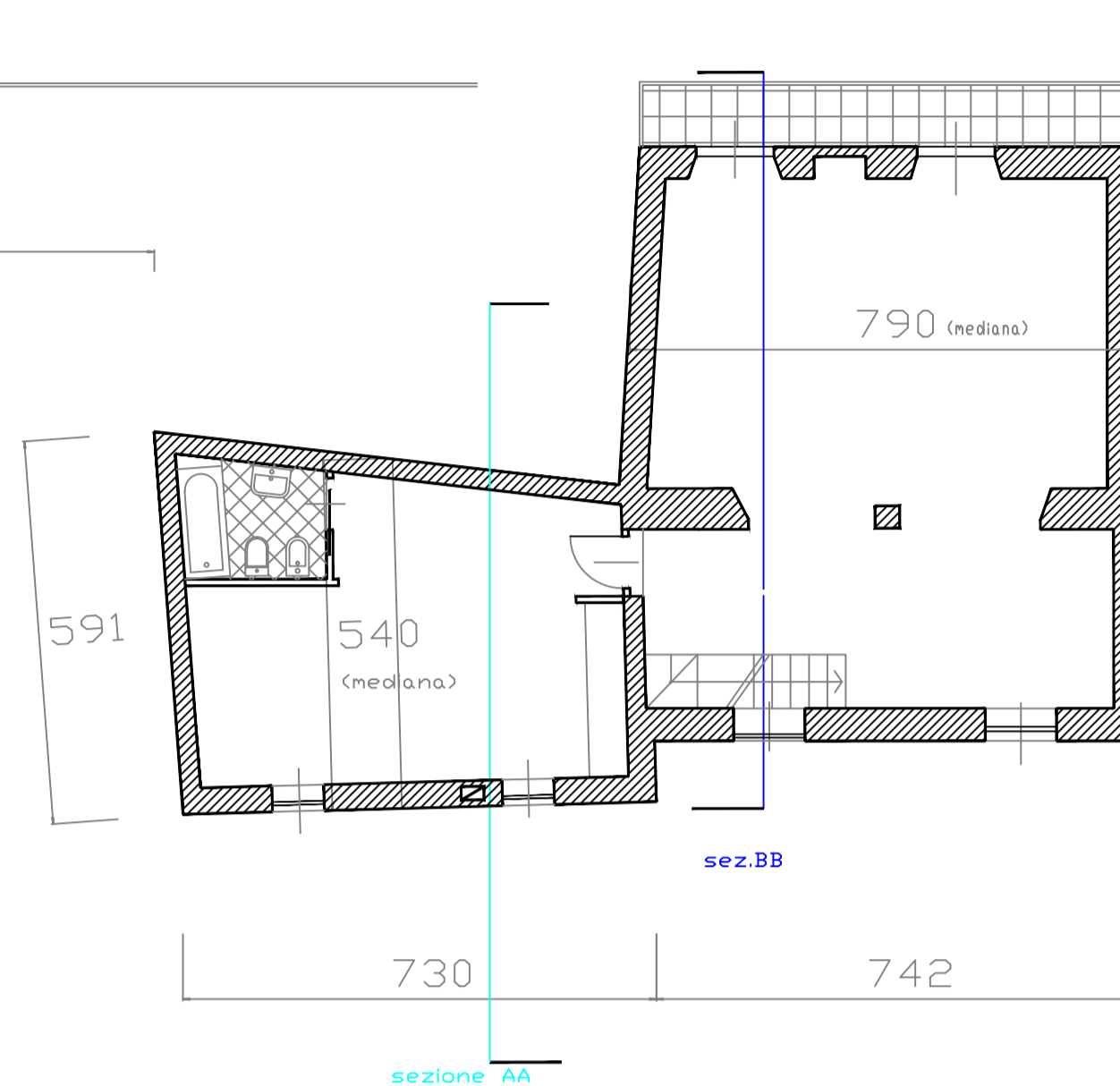
$P1 = 3.95 \times 5.5 = \text{mq.} 21.7 \times \text{h.} 2.45 = \text{mc.} 53$ totale = $\text{mc.} 170 + 53 = \text{mc.} 223$



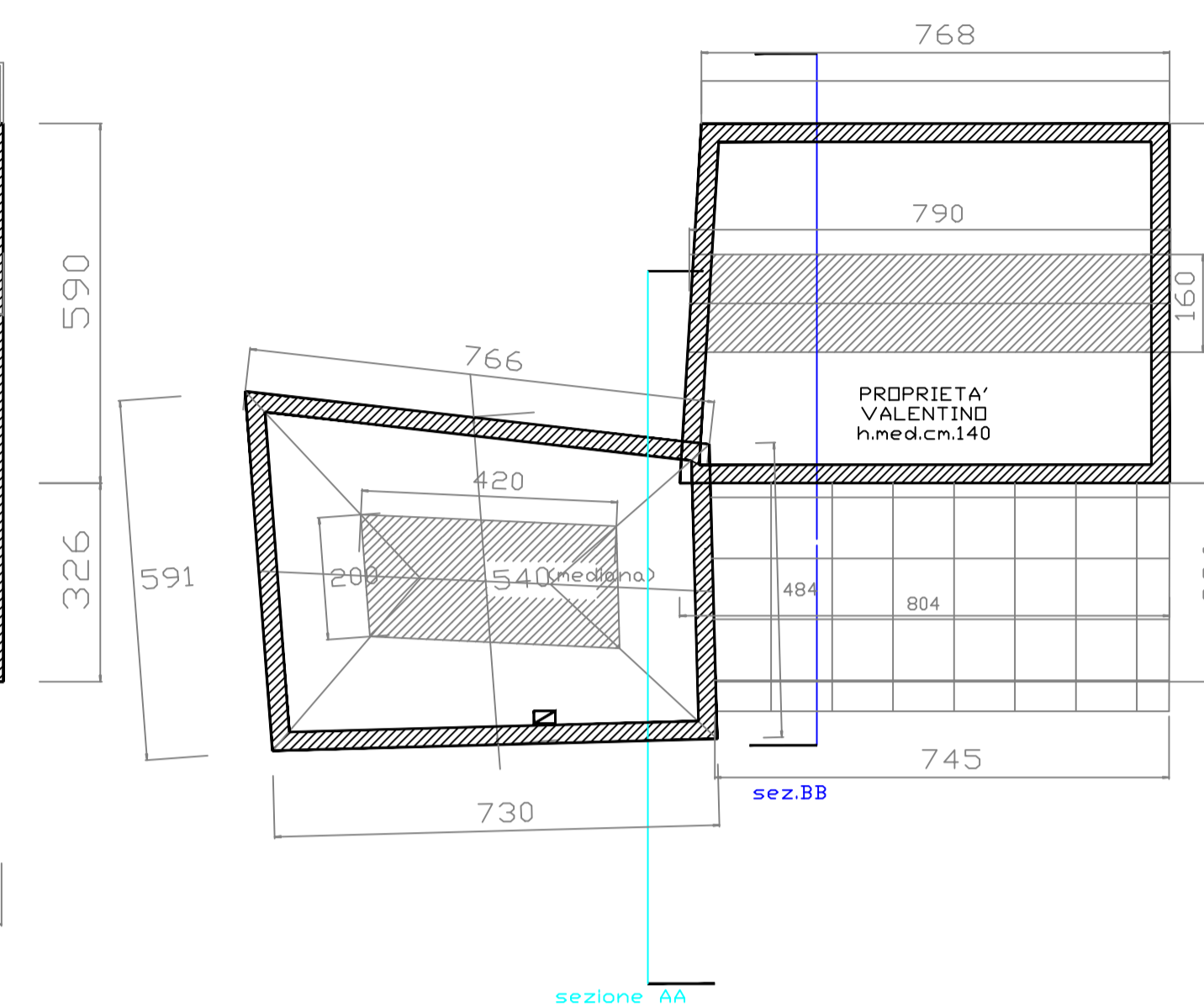
Pianta Piano Terra



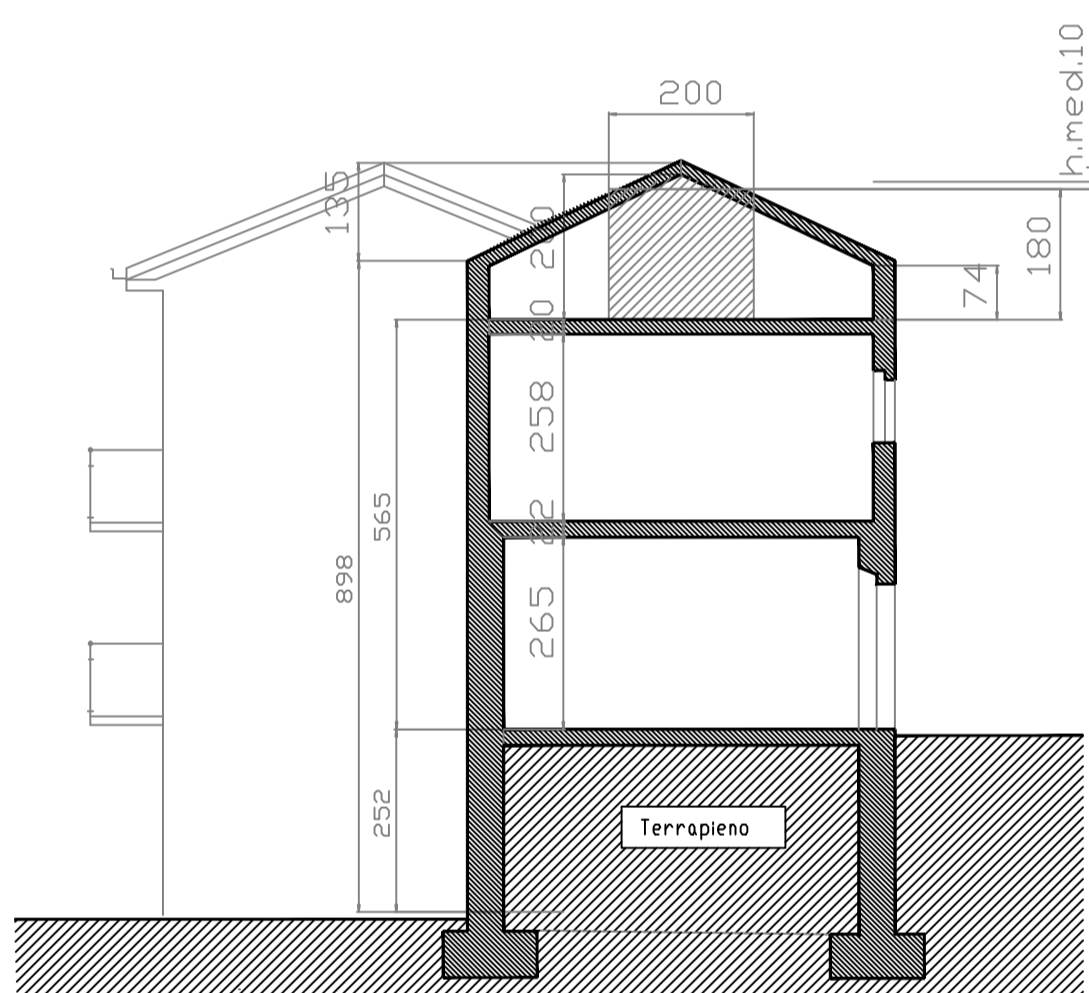
Pianta Piano Primo



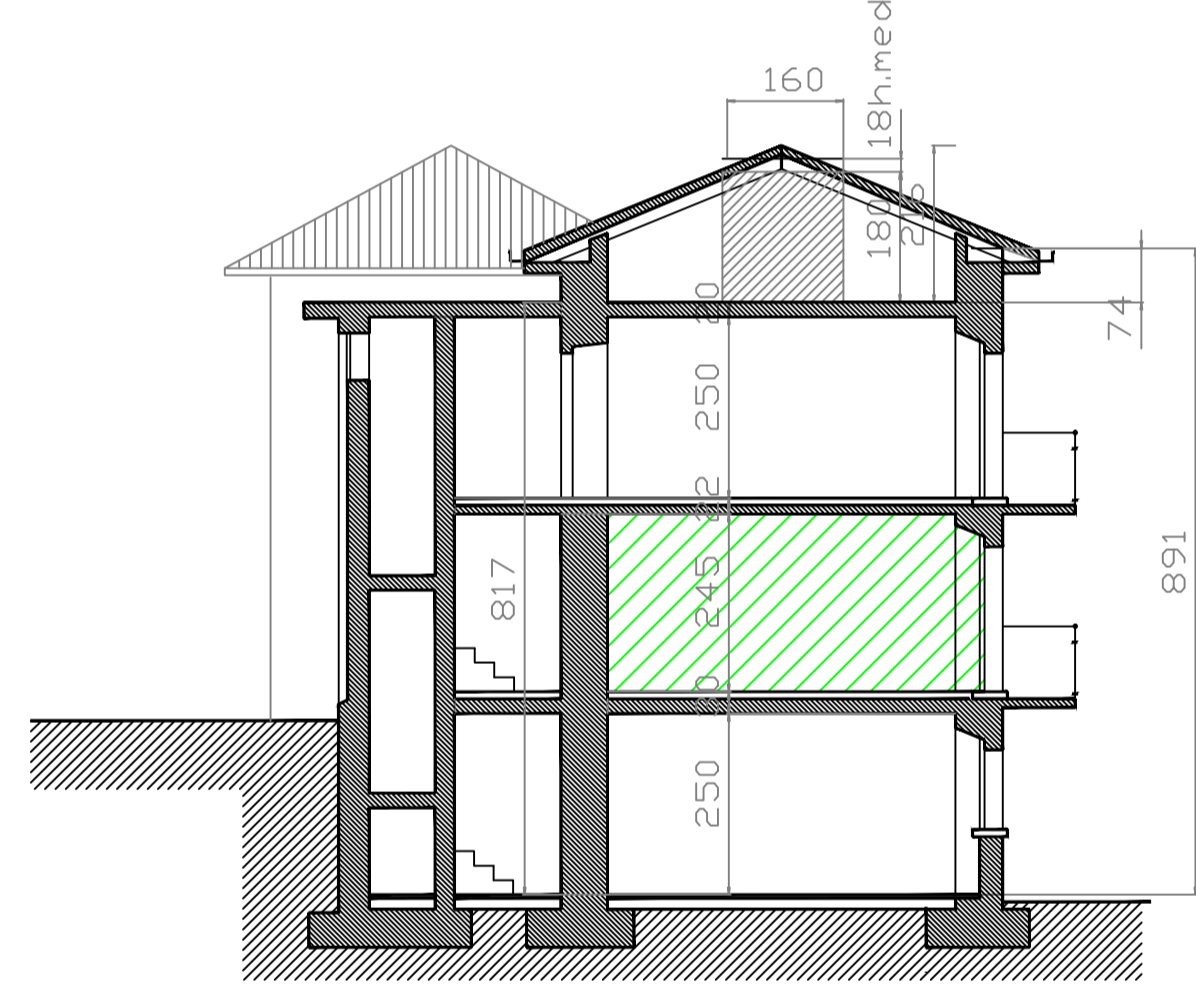
Pianta Piano Secondo



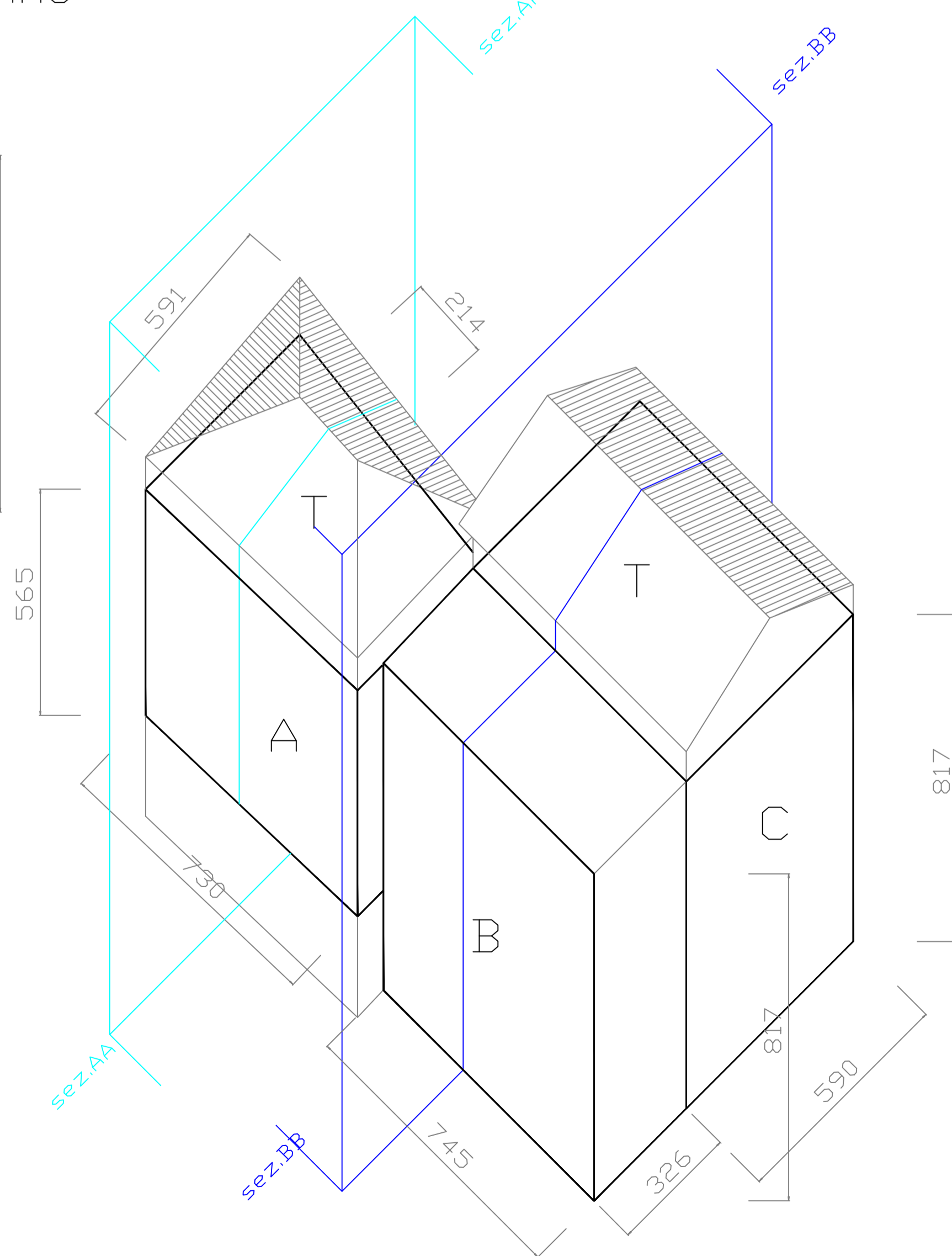
Pianta Piano Sottotetto



Sezione AA



Sezione BB



$A = 7.3 \times 5.4 \times \text{h.} 5.65 = \text{mc.} 222.73$
 $T = 4.2 \times 2 \times \text{h.} 1.8 + 4.2 \times 2 \times 0,1 \text{h.med.} = \text{mc.} 16$
 $B = 7.45 \times 3.26 \times \text{h.} 8.17 = \text{mc.} 198.5$
 $C = 5.9 \times 7.9 (\text{mediana}) \times \text{h.} 8.17 = \text{mc.} 380,8$
 $T = 7.9 \times 1.6 \times \text{h.} 1.8 + 7.9 \times 1,6 \times 0,18 \text{h.med.} = \text{mc.} 25$

VOLUME TOTALE ESISTENTE

$222,73 + 16 + 198,5 + 380,8 + 25 = \text{mc.} 843 - 223 = \text{mc.} 620$

CODICE PRATICA
VLNLV165P67E716V-03062019-1056



Mod. Comunale
(Modello 0607 Versione 001-2017)

Allo Sportello Unico Edilizia privata del Comune di Baveno
103008

RICHIESTA APPROVAZIONE STRUMENTO URBANISTICO ESECUTIVO
IN ZONA MULINO DI RIPA STRATA STATALE DEL SEMPIONE

Proprietà: Valentino Livia, Via Sempione n°18 28831 BAVENO (VB) tel.3473698040

Progettista: arch.Marco Apostolo, Via Mottarone n°4 BAVENO (VB) tel.3386345446



Rappresentazione:

CALCOLO DEI VOLUMI ESISTENTI

Tav.n°

11

Scala 1:100