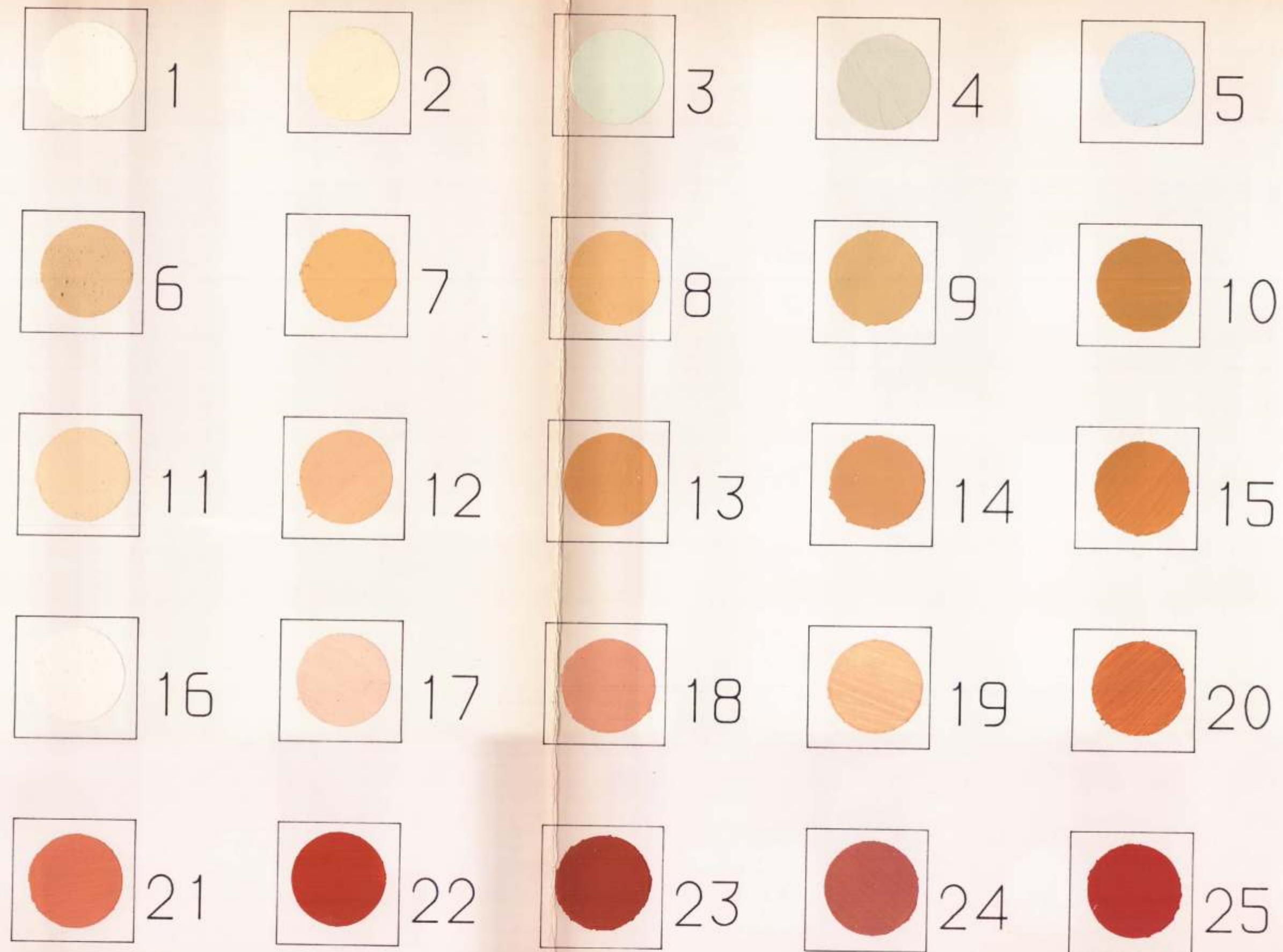
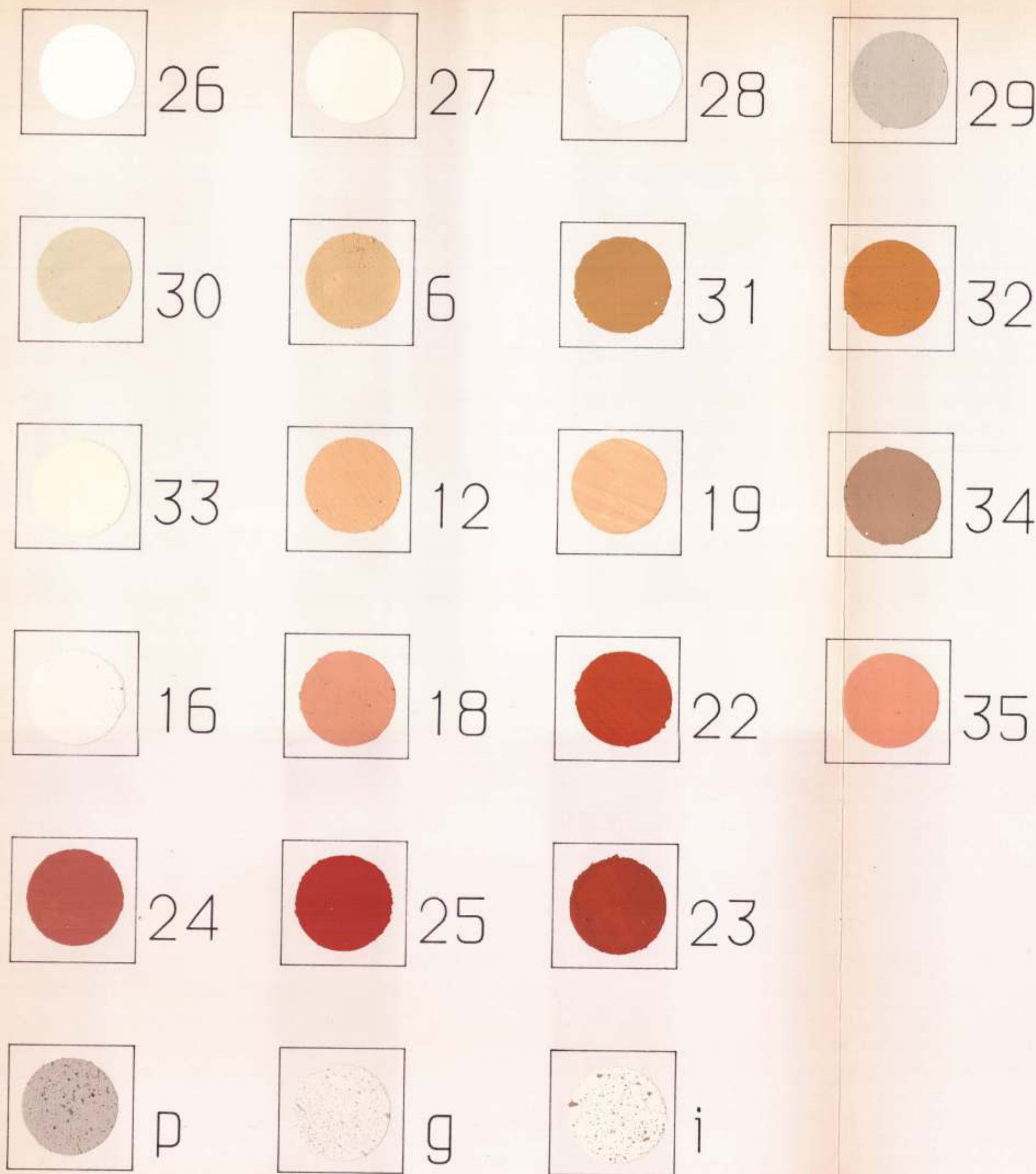


FONDI



CORNICI



ZOCCOLI

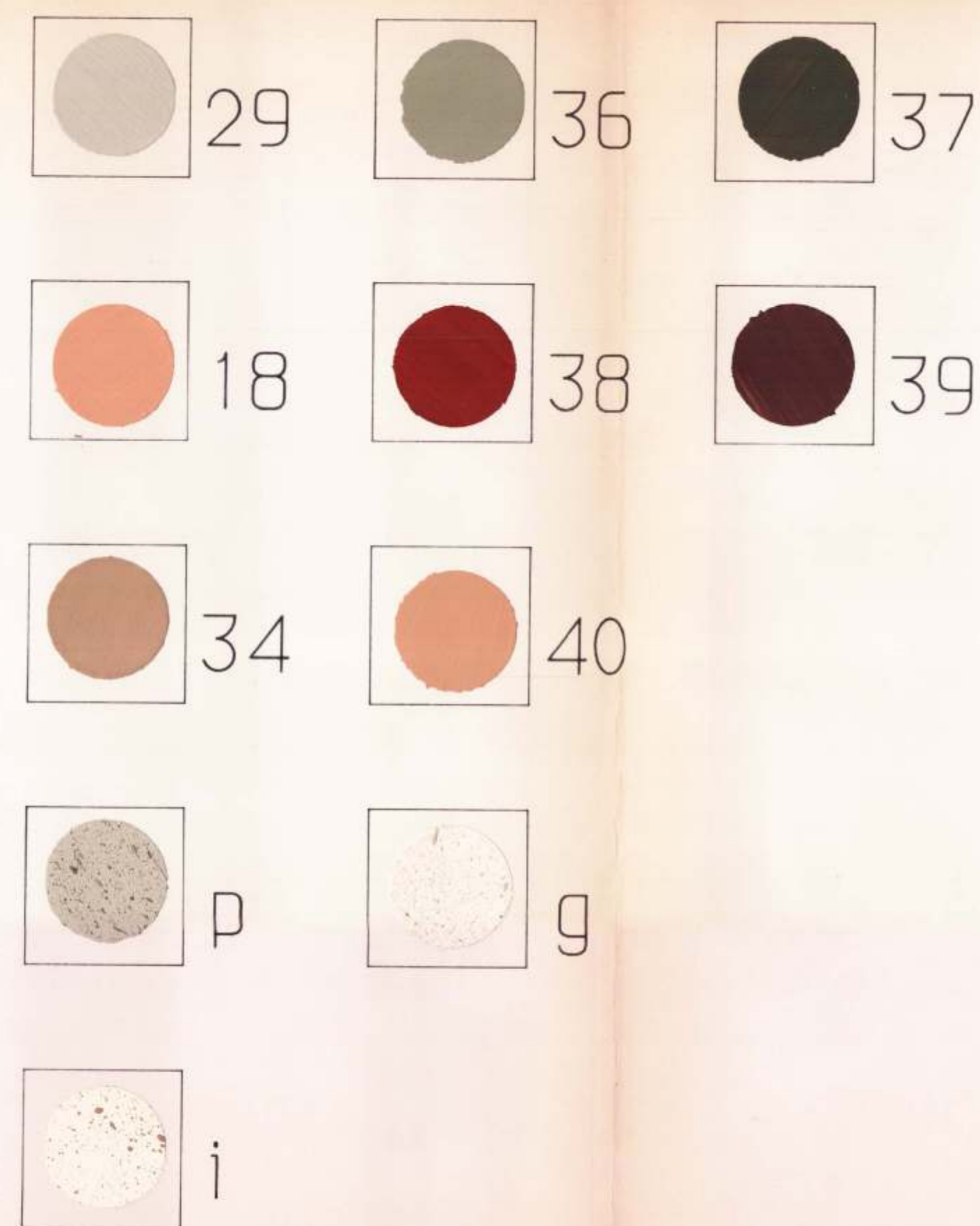


TABELLA COMPARATIVA
DI RIFERIMENTO
DEI COLORI UTILIZZATI

NUMERO	NATURAL COLOR SYSTEM
1	1010-Y30R
2	0020-Y30R
3	1010-G50Y
4	2010-Y10R
5	2010-B
6	2020-Y20R
7	1040-Y20R
8	0040-Y20R
9	3030-Y10R
10	2040-Y20R
11	1020-Y30R
12	2020-Y40R
13	1040-Y30R
14	2040-Y30R
15	3050-Y30R
16	0010-Y60R
17	1020-Y60R
18	2030-Y60R
19	2030-Y30R
20	3040-Y40R
21	2040-Y60R
22	3050-Y60R
23	4040-Y60R
24	4030-Y70R
25	3050-Y80R
26	0005-Y20R
27	0010-Y20R
28	1000
29	2005-Y50R
30	2010-Y
31	3040-Y20R
32	3060-Y20R
33	1010-Y10R
34	4020-Y50R
35	2030-Y70R
36	4010-G90Y
37	7502-R
38	4050-Y90R
39	7020-Y90R
40	3030-Y60R

IL PIANO DEL COLORE

del Comune di Baveno

PROGETTISTA:
FABRIZIO BIANCHETTI ARCHITETTO
Via De Amicis 30, Omegna (NO)
Tel. 0323/61266

MARZO 1994

RILEVAMENTO
TAVOLOZZA COLORI

SCALA:
1:500

ELABORATO:
P2